

## VARION KHF5



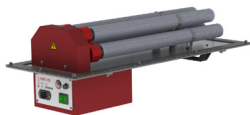
### Technical Specifications

Voltage	220-240V , 50-60Hz
Max. Power Consumption	30 W
Tube Technology	BENTAX® Bi-polare Ionisation Tube
Air Volume <sup>1)</sup>	Up to 5000 m <sup>3</sup> /h
Air Speed in Duct	Max. 20 m/s
Air Speed above Tubes	Max. 3 m/s
Dimensions (LxDxH):	636 x220 x 208 mm
Weight	9 kg

<sup>1)</sup> Depending on the air quality

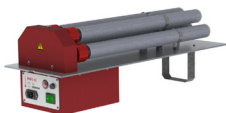
## Variants

### KHF5-CE



Base-System KHF5 , Protection Class IP 62  
 Mountingframe MFR for the **mounting outside** of the air-duct  
 Handle (Plastic)  
 Connection-Panel C: Power connection according IEC 60320-1  
 with C14 Socket for power-cables with C13 plug.

### KHF5-CI



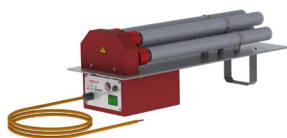
Base-System KHF5 , Protection Class IP52  
 Mounting Bracket MBR **for mounting inside** of the air-duct or  
 monoblock  
 Connection-Panel C: Power connection with 3 pole cable.  
 Cable ends stripped and re-inforced..

### KHF5-PE



Base-System KHF5 , Protection Class IP62  
 Mountingframe MFR for the **mounting outside** of the air-duct  
 Handle (Plastic)  
 Connection Panel P: Power connection according IEC 60320-1  
 with C14 Socket for power-cables with C13 plug.

### KHF5-PI



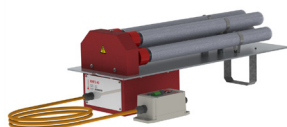
Base-System KHF5 , Protection Class IP52  
 Mounting Bracket MBR **for mounting inside** of the air-duct or  
 monoblock  
 Connection Panel P: Power connection with 3 pole cable. Cable  
 ends stripped and re-inforced.

### KHF5-KE



Base-System KHF5 , Protection Class IP63 or IP67 as special  
 option  
 Mountingframe MFR for the **mounting outside** of the air-duct  
 Handle (Plastic)  
 Connection Panel K: Power connection with 3 pole cable ,  
 external Controlbox EKB

### KHF5-KI



Base-System KHF5 , Protection Class IP63 or IP67 as special  
 option  
 Mounting Bracket MBR **for mounting inside** of the air-duct or  
 monoblock Connection Panel K: Power connection with 3 pole  
 cable , external Controlbox EKB

## Options

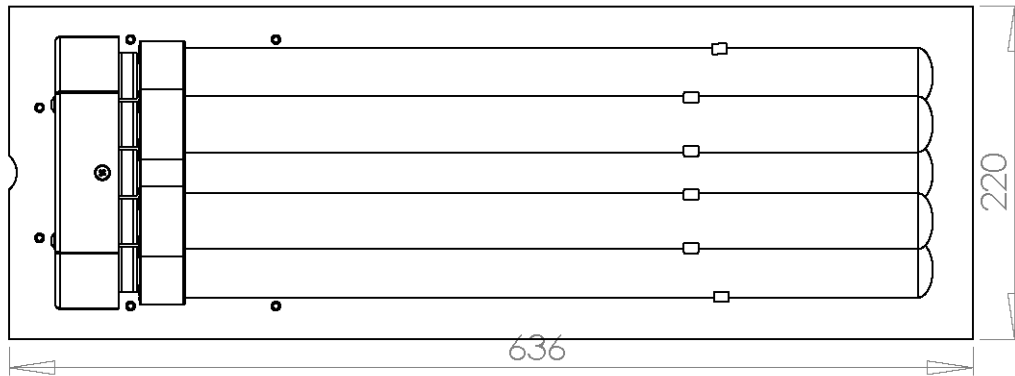
### /VC

Control with a VOC Sensor

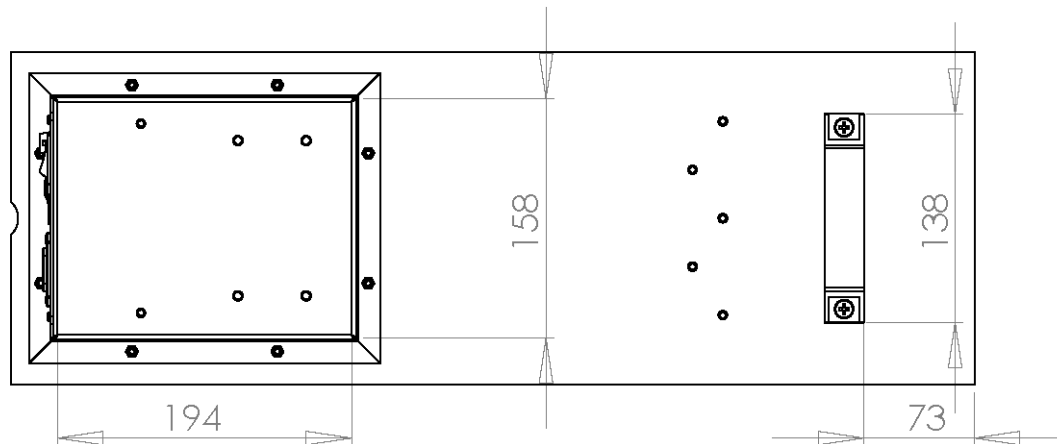
### /IR

Control of the Ion-Power with a standard interface 0-10V or an 4-20mA Current Loop.  
 The Controlinterface is operated directly by the central control system of an existing  
 HVAC System.

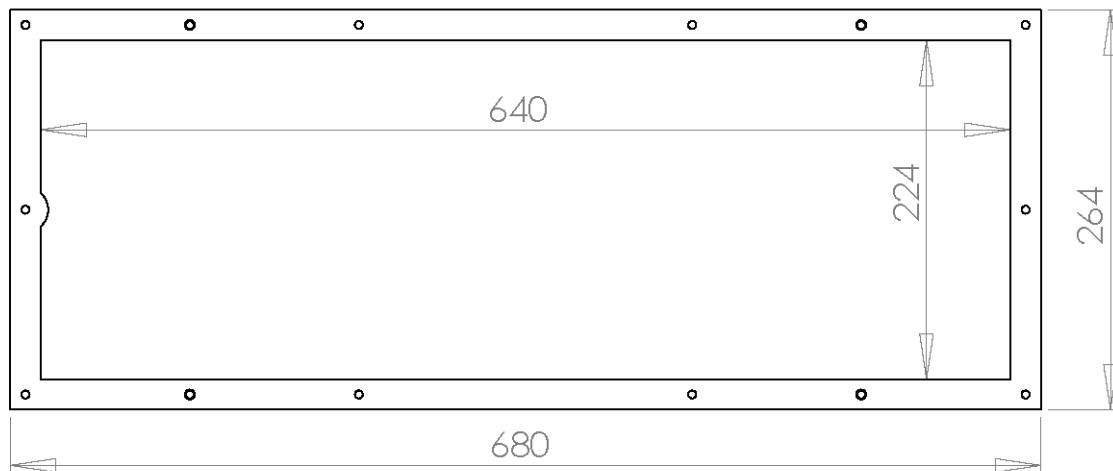
Ansicht Oben  
 View Top



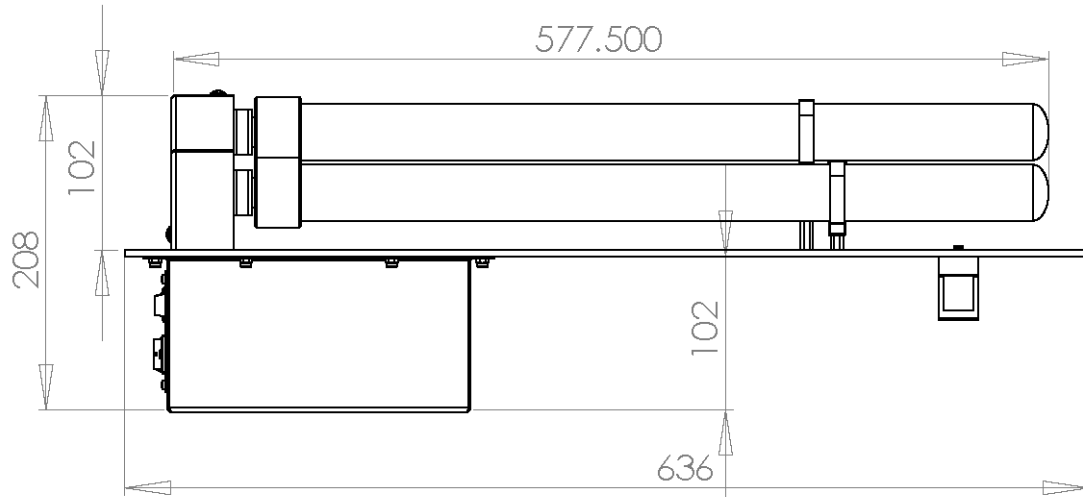
Ansicht Unten  
 View Bottom



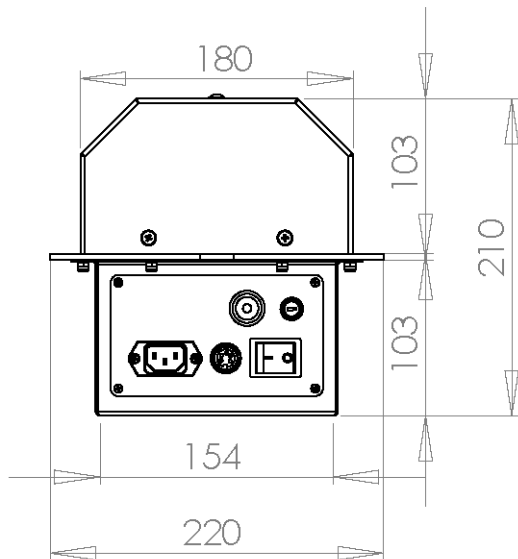
Montagerahmen MFR  
 Mounting-Frame MFR



Ansicht Seite  
 View Side



Ansicht Vorne  
 View Front



Ansicht Hinten  
 View Rear

